



# Connection

## August 2025

We believe that experienced, reputable, and fast responding IT support should be the standard!

### Our Services:

- Data Backup & Recovery
- Managed Services
- IT Consulting
- Network Security
- Cloud Computing
- Remote IT Services
- Cyber Security Training
- Mobile Device Management
- VoIP Phones
- Co-Managed IT



## DON'T LET OUTDATED TECH SLOW YOU DOWN: BUILD A SMART I.T. REFRESH PLAN

When was the last time you upgraded your office tech? If your team has ever lost hours to a slow laptop or had a big meeting interrupted by a crashing system, you're not alone. Outdated technology has a way of slowing down even the most efficient businesses—often at the worst possible time.

### UPGRADE YOUR BUSINESS WITH A SMARTER I.T. REFRESH PLAN

If your team is still using outdated computers, sluggish software, or unsupported systems, it's not just inconvenient—it's costing you time, money, and productivity.

(continued on page 2)

Let's get  
social!



**Instagram:**  
computer\_services\_unlimited



**Facebook:**  
Computer Services Unlimited Inc.



**LinkedIn:**  
Computer Services Unlimited Inc.



**Phone:**  
(703) 968-2600



**Digital Newsletter:**  
www.csuinc.com/news



Studies show that small businesses lose nearly 100 hours per year due to slow, aging technology. That's nearly two full weeks of lost productivity—and likely a lot of frustration.

As your trusted IT partner, we can help ensure your technology keeps pace with your business goals. A proactive IT refresh plan helps avoid unexpected downtime, keeps your systems secure, and ensures your team stays productive—day in and day out.

## WHY YOU NEED A TECHNOLOGY REFRESH STRATEGY

Waiting until a system fails before replacing it might seem like a cost-saving move, but in reality, it increases:

- Downtime – One broken device can grind your operations to a halt.
- Lost productivity – Old devices crash more often and slow your team down.
- Security vulnerabilities – Older systems miss out on essential updates and patches.
- Compliance risks – Especially if your industry has specific IT standards or regulations.

By planning ahead, you avoid reactive spending and build a more efficient and secure foundation for growth.

## OUR TOP 4 RECOMMENDATIONS FOR A SMARTER IT UPGRADE

Here's how we help clients like you modernize without disrupting business:

### 1. Replace Devices Gradually

Instead of replacing everything at once, we'll help you identify which systems need attention and create a phased plan. This reduces sticker shock and ensures minimal disruption.

### 2. Set a Refresh Schedule

We can work with you to create a schedule—every 3 to 5 years is ideal for most equipment—so you're never caught off guard.

### 3. Ensure Software Compatibility

As your systems evolve, we'll make sure your hardware and software continue working seamlessly together.

### 4. Explore Leasing Options

Want the latest equipment without the upfront costs? Leasing might be the perfect solution.

## TRACK YOUR HARDWARE LIKE A PRO

We can also help you create a simple hardware inventory to monitor:

- Devices you own
- Purchase dates and warranties
- Assigned users
- Any history of issues

This gives you full visibility into your tech and simplifies future upgrades.

## READY TO REFRESH? HERE'S HOW TO START:

### 1. Take Stock

We'll help you evaluate your current devices.

### 2. Set Goals

Align your IT plan with where your business is heading.

### 3. Talk To Us

Let's create a roadmap that fits your budget and workflow.

### 4. Build a Schedule

Avoid surprises by planning for upgrades.

### 5. Review Annually

We'll check in regularly to keep you on track.

## STAY AHEAD WITH EXPERT IT SUPPORT

Whether you manage IT internally or rely on outside support, a well-executed refresh plan safeguards your productivity and ensures your business is equipped for tomorrow.

Need help getting started? Let's build your custom upgrade plan today!



## Tech Giggles!

What's the IT guy's favorite water activity?

...  
Surfing the web!



## Gadget of the Month!

**\$69.00 on  
MyAirO.com**



### ORIMOUSE

A foldable Bluetooth mouse inspired by origami, combining portability with full-sized comfort and precision.

Perfect for digital nomads and professionals, it transforms effortlessly to adapt to your needs.

This 40 gram-mouse's features include instant activation, ergonomic design, quiet precision, and a USB-C rechargeable battery lasting up to 3 months.

Ideal for work anywhere, anytime.





The global tech industry has invested billions in developing robust, intelligent systems. Programming tools have become significantly more sophisticated, and software development methodologies have matured. Yet, instability and bugs remain a common user experience—especially in widely used platforms.

## A Closer Look at the Software Industry

One of the reasons for persistent issues lies in the balance (or imbalance) between innovation and stability. Large software vendors, like Microsoft and others, operate in a highly competitive and profit-driven environment. There is immense pressure to release new versions, introduce new features, and drive product upgrades—often on a tight timeline.

This business model can lead to software being released before it has been thoroughly refined. Even after a product becomes relatively stable, it's often replaced by a newer version—frequently with a redesigned interface or feature set that introduces its own learning curve and new set of bugs. The rapid release cycle prioritizes growth and market share, sometimes at the expense of usability and reliability.

## Why It Matters for Businesses

While innovation is essential, businesses rely on consistent performance, minimal downtime, and dependable technology to stay competitive. Unfortunately, software that crashes or systems that fail can have a real-world impact, such as:

- Lost productivity
- Disrupted operations

## A Thought... Why Do Computers *Still* Crash in 2025?

Despite decades of advancements in computing, few things are more frustrating than dealing with a system that freezes, crashes, or slows to a crawl—especially when you need it most. Whether it's a desktop at work, a tablet on the road, or software critical to daily operations, these interruptions raise an important question:

*Why do our devices still crash, even after all these years of technological progress?*

- Increased support costs
- Frustrated end users and staff

These aren't just annoyances—they're operational risks.

## Holding Technology to Higher Standards

We wouldn't accept a medical device that fails mid-procedure, or a car that stalls every few trips. Technology in business should meet the same expectations: reliability, predictability, and performance. After all, we're no longer in the early days of computing. This is a mature industry, and the tools we rely on should reflect that.

## What You Can Do About It?

At CSU, we can help you navigate these challenges by:

- Implementing stable, proven software stacks
- Staying on top of patch cycles and compatibility testing
- Advising on upgrade timing that maximizes productivity
- Offering proactive support to catch issues before they escalate

If your systems are still prone to freezes or software failures, it might be time for a closer look. We can help you identify the root causes—whether they're hardware-related, software conflicts, or simply overdue updates—and design a strategy for smoother operations.

Need help troubleshooting recurring crashes or planning a software refresh? Let's talk about how we can make your technology more resilient.

# Q&A

### **Q: Is it really that risky to let staff use their own devices for work?**

**A:** Yes, if it's not managed properly. Personal devices are often less secure. And if they're lost or compromised, your business data could go with them.

### **Q: How often should we change our passwords?**

**A:** Actually, it's better to focus on using strong, unique randomly generated passwords with multi-factor authentication, than changing them all the time. A good password manager can help.

### **Q: Do we really need to back up data if we're using cloud services?**

**A:** Yes! Most cloud services protect their systems, but not your data. Accidental deletion, user error, or cyberattacks can still result in loss.

# TURN OLD SMARTPHONES INTO HANDY TOOLS: METAL DETECTION MADE EASY

Most people upgrade their smartphones regularly, often leaving previous devices to sit id in a drawer. While these older phones may no longer be cutting-edge, they're still powerf portable computers with untapped potential.

If you've ever felt reluctant to let a perfectly good device go to waste, here's a creative ar practical use: turn your old smartphone into a metal detector.

## HOW IT WORKS

Smartphones contain magnetometers—sensors designed to measure magnetic fields. With the help of a free app, your device can use this hardware to detect metal objects nearby. While it won't match the depth range of professional detectors, it's surprisingly effective for locating small metal items like:

- Screws or nails dropped in the grass
- A missing key or ring at a campsite
- Lost items on sandy beaches or cluttered garages

## SIMPLE SETUP FOR IPHONE OR ANDROID

To repurpose your old device:

**For iPhone:** Search the App Store for a reputable "metal detector" app and install it.

**For Android:** The Google Play Store also offers free metal detector apps—just download and follow the instructions.

Once installed, the app will allow your phone to detect nearby metal by analyzing magnetic field variations.

## BONUS TIP FOR PRACTICAL USE

If you're the hands-on type, you can even mount the phone to a stick or pole to avoid bending over during a search—turning your phone into a functional, DIY-style detection tool.

And if you ever need a quick solution in the moment, you can use your current smartphone too. Simply install the app, find what you need, and uninstall it once you're done.





# What's NEW at CSU?



Caitlyn is now a work-from-home part-timer... but she came in early one day to leave a silly little note!

**PUP-DATE!**

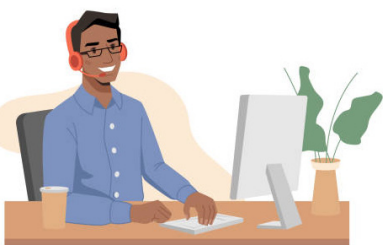


Faye on alert for pesky squirrels at CSU!



Michelle & Chuck's grandpup is loving farm life!... and mud too!

*We got to celebrate Paola's birthday! Ice cream cake is always a favorite, though if you let it soften too long, it melts a little. Caitlyn couldn't join us in person, but her playful "Did you miss me?" made sure she was there in spirit—and in our laughter.*



## Help your FAVORITE CSU tech put \$50 in their pocket!

Refer them to another business and help them win \$50! Just tell a business about your tech, then email us at [info@csuinc.com](mailto:info@csuinc.com) with the tech's name, the business name, a contact person, and their phone number. Spread the word and help your CSU tech win some extra cash!





Computer Services Unlimited  
14240-G Sullyfield Cir  
Chantilly, VA 20151



You take care of your business,  
we'll take care of your technology.

# Connection

## August 2025

**"You must not lose faith  
in humanity. Humanity  
is an ocean; if a few  
drops of the ocean are  
dirty, the ocean does  
not become dirty."**

**Mahatma Gandhi**

### ***In this Newsletter...***

- pg 1-3:** *Don't Let Outdated Tech Slow You Down | Gadget of the Month*
- pg 4-5:** *Why Do Computers Still Crash in 2025? | Q & A*
- pg 6-7:** *Old Smartphones into Handy Tools | Caitlyn's Silly Note | A Pup-date | Paola's Birthday Celebration*